

# IMPORTANT NOTICE

This document **MUST** be forwarded to your architect or building contractor to ensure that the site is prepared correctly as any mistakes could be extremely costly.

astor   
bannerman

Pre-Installation Document

**BA2-ISIS**



# General Site Requirements.

**The wall decoration and floor covering must be complete and finished.**

## Positioning and fixing the unit.

The Isis bath stands and is secured to the floor. Floors must have sufficient depth in order to receive 30mm long screws and associated wall plugs (please indicate any under-floor heating so that alternative arrangements can be made). Adjacent walls need to be plumb, flat and clear of obstructions from floor level to 1050mm. Skirting boards may be left in place.

### Fig 1

If the unit is to be installed in an alcove or into a corner the side wall/walls will also have to be clear for a height of 1050mm.

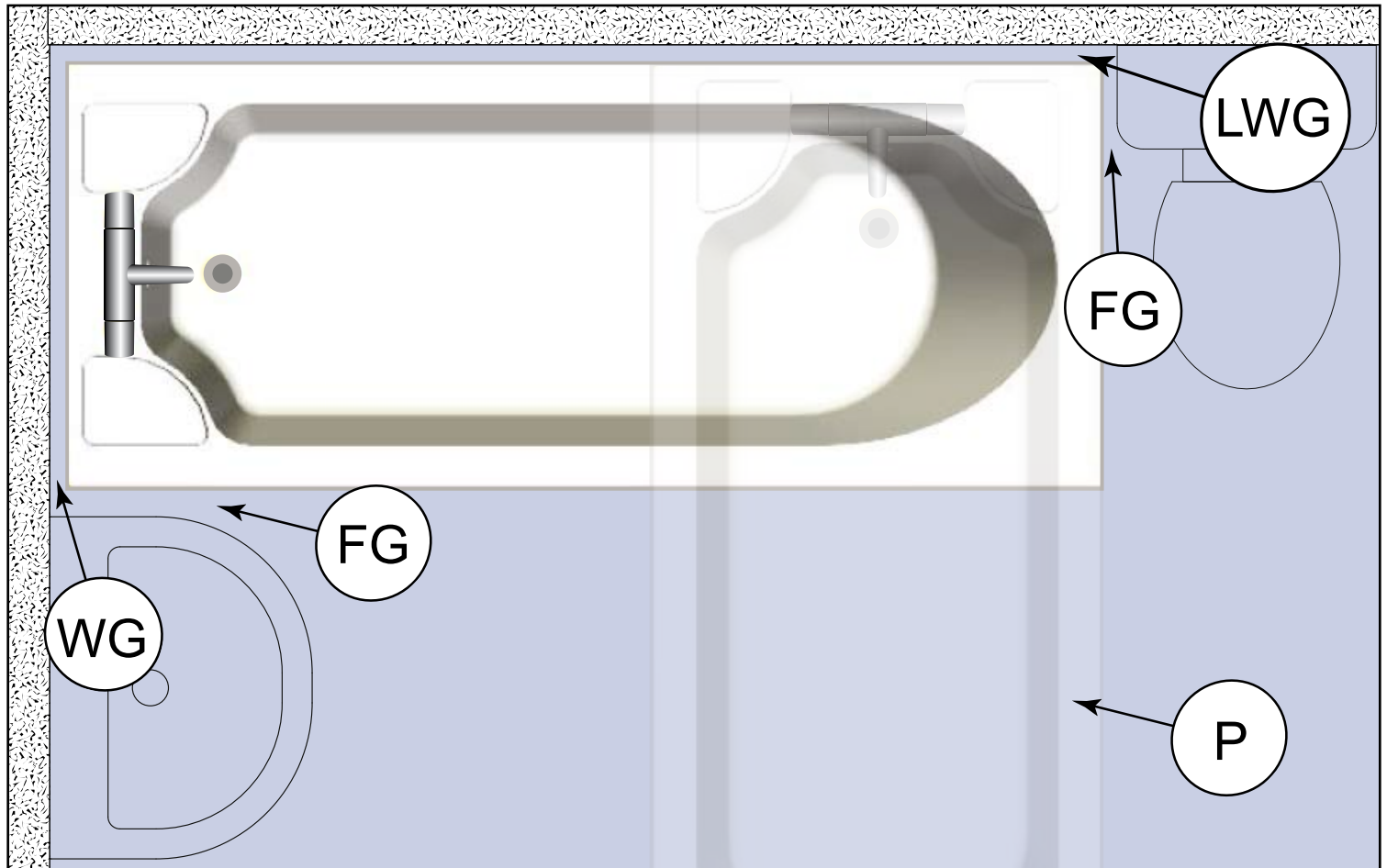
The bath can be fitted as a Corner unit, Peninsular unit (P) or an Island unit.

A minimum clearance of 40mm is required against any adjacent walls (WG & LWG) and fixed appliances (FG) including toilets, radiators, sinks and shower units.

**Note: If the bath (corner fitting) is ordered with neatfold stretcher, the gap at the long side of the bath (LWG) would have to be 65mm.**

**If a Peninsular (P) or Island layout is required with a neatfold stretcher there must be enough clearance for the stretcher to swing and fold to the side of the bath, 400mm minimum.**

### Fig 1



# Positioning and fixing the unit - Continued

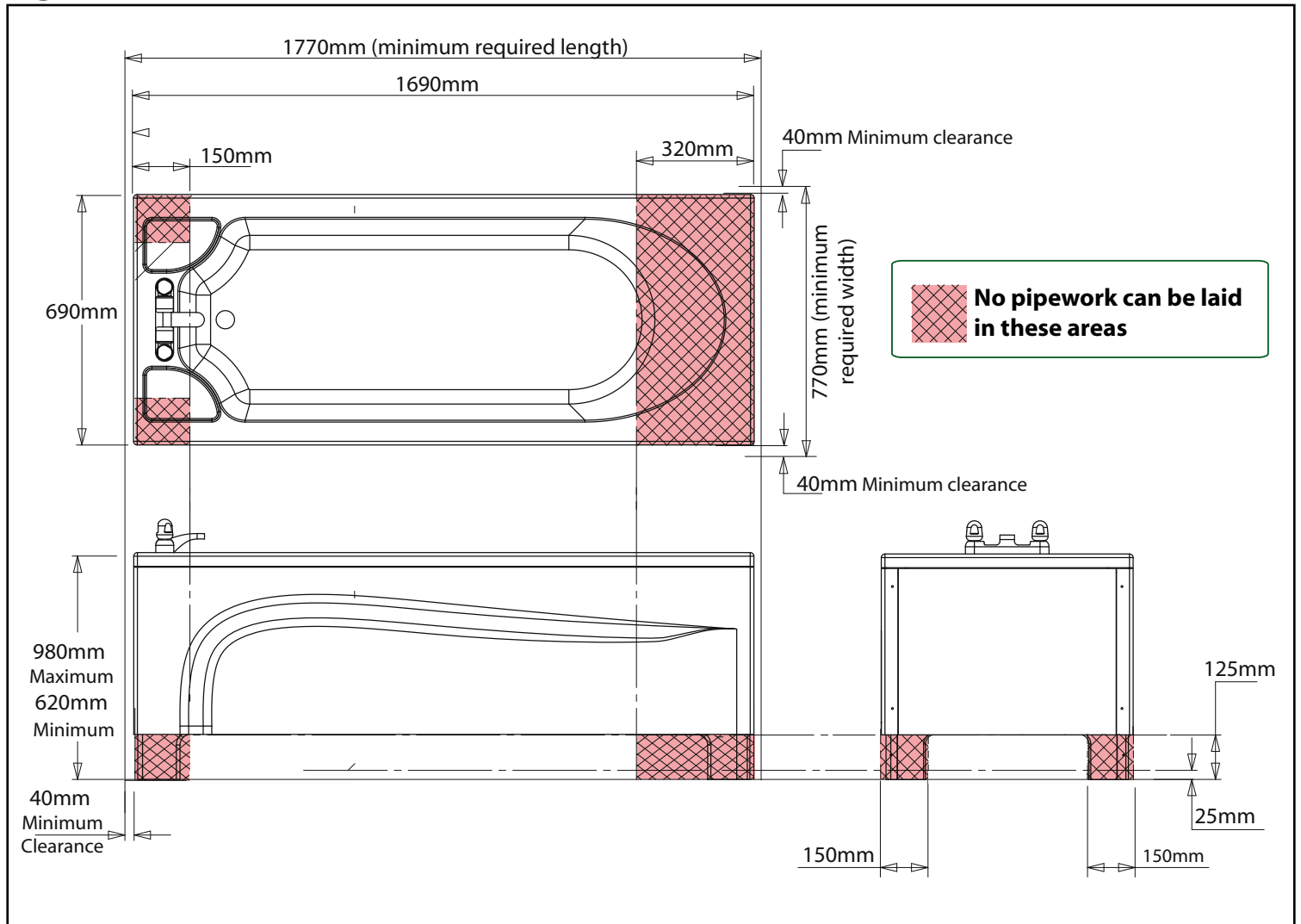
## Fig 2 & 2a

When calculating the footprint of the bath use the diagram below and ensure the clearances are provided at the ends and at the sides.

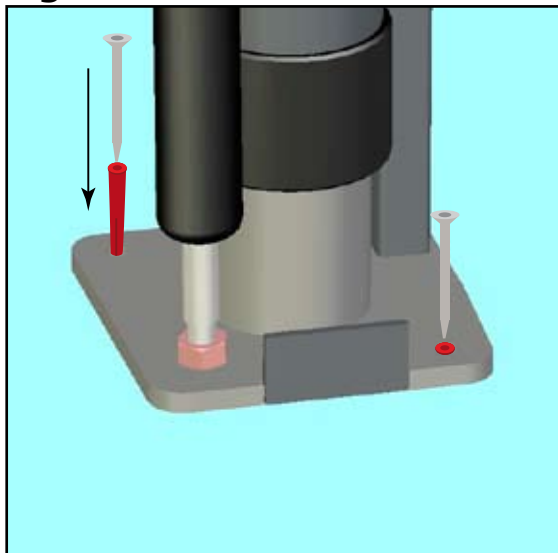
The red shaded areas must be kept clear of any pipework or wiring above and below the floor.

The floor must be strong enough (especially in the foot areas) to carry the weight of the bath when full and occupied.

## Fig 2



## Fig 2a



Each foot is screwed to the floor as shown.

# Plumbing Options

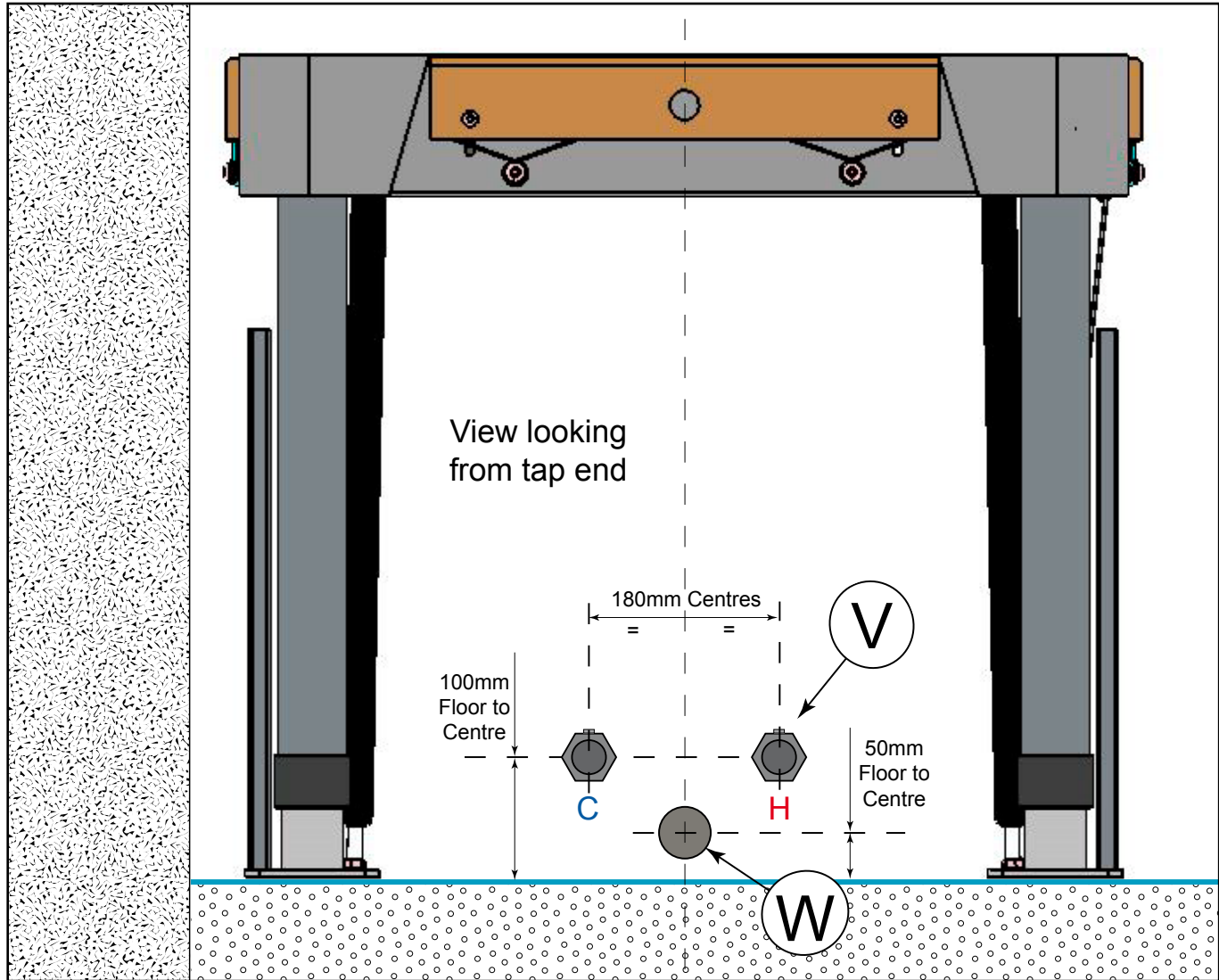
**Fig 3 & 4**

There are various plumbing options and the outlet positions of the water and waste services.

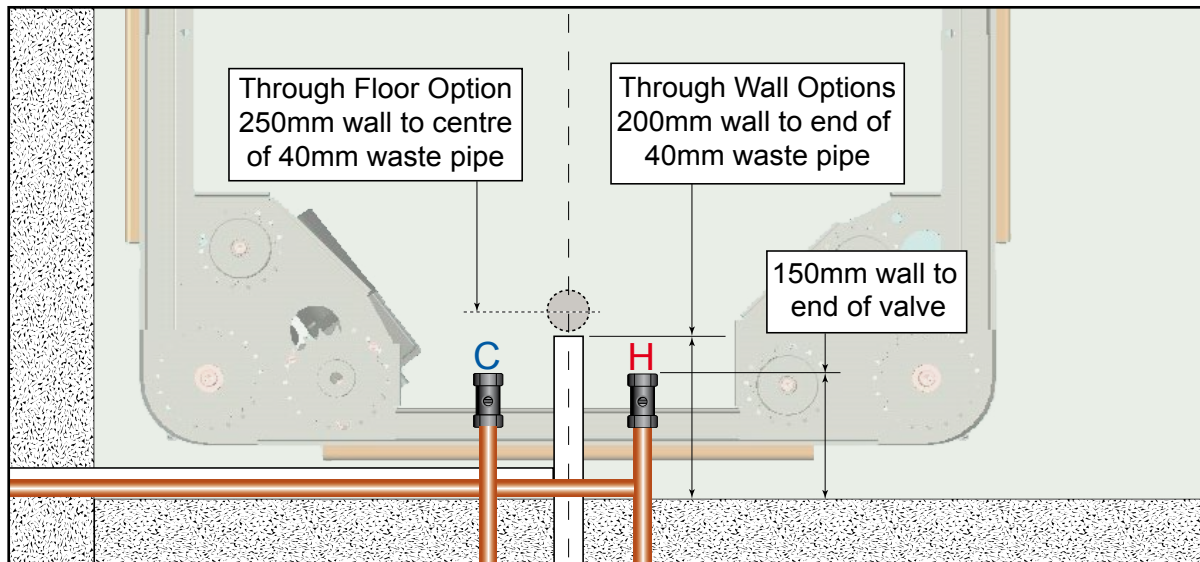
These services must be at the tap end of the bath.

22mm ball type isolation valves (V) should be positioned and orientated exactly as shown but can be fed through the wall (SW) or the floor (SF). See Fig 5.

**Fig 3**



**Fig 4**



# Plumbing Options Continued.

## Fig 4 & 5

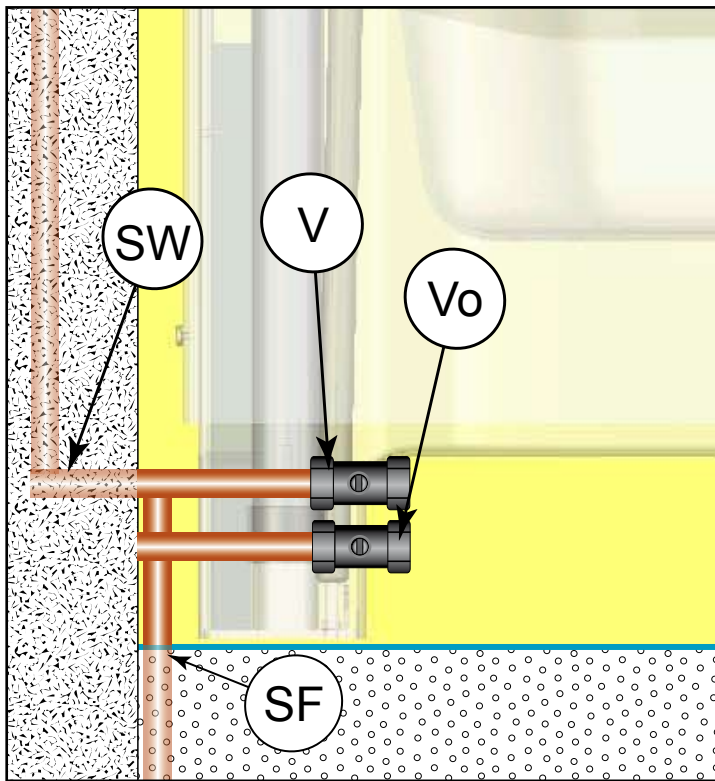
If the water service pipes need to be fitted along the wall from a side wall they need to be kept tight against the wall.

The water service pipes can be offset vertically (V and Vo) providing the centre of the top pipe is no more than 100mm from the floor.

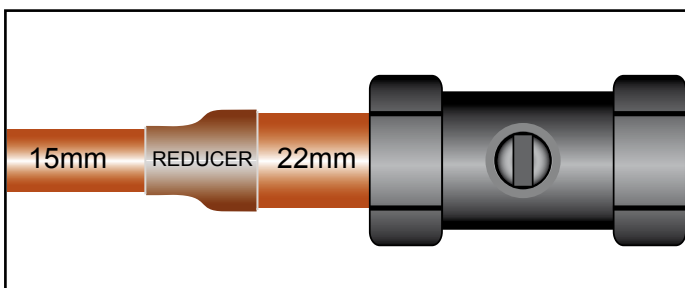
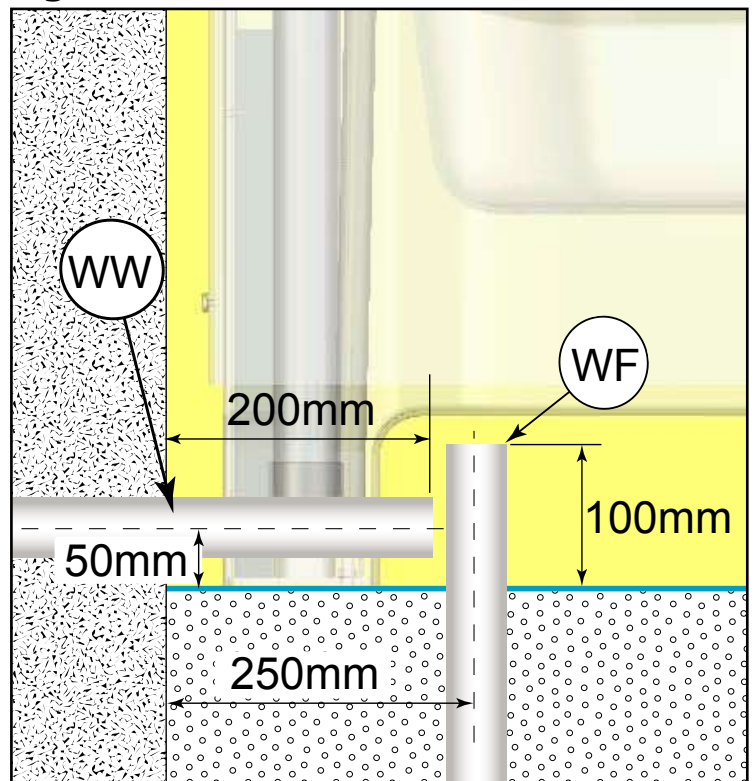
If the waste is to be fed along the the wall from a side wall it must be kept tight to the wall and be positioned below the water service pipes.

The 40mm waste pipe can be fed through the wall (WW) or floor (WF) as shown and cut to the lengths indicated.

## Fig 5



## Fig 6



**Note: If the site piping is 15mm then this should be expanded to 22mm piping at the valve end to accommodate the valves.**

## Tap Options

The Isis bath can be supplied with various tap/mixer sets.

The minimum water pressure on each supply must be 1 bar or above, Maximum of 10 bar with a differential of no more than 5 bar.

### Note:

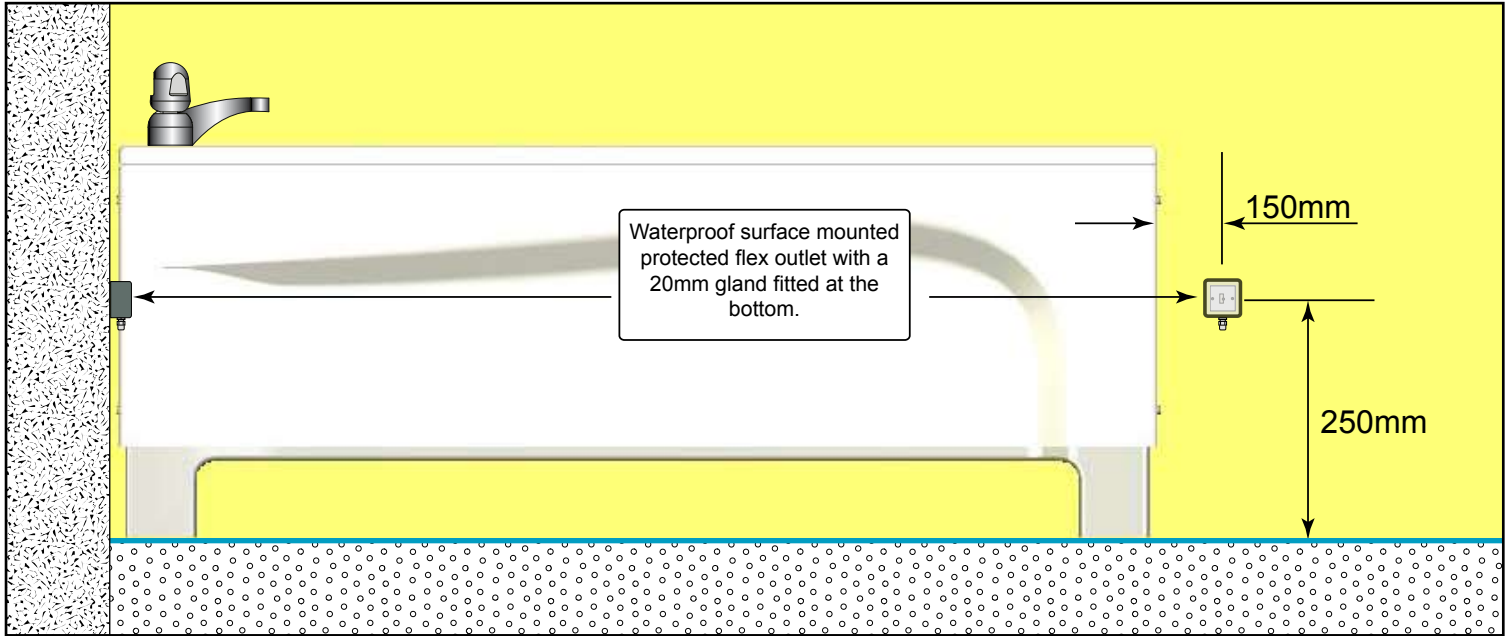
**If the bath is fitted with Low Level Taps then the supply pressures must be equal with a minimum 1 bar.**

# Electrical Connection.

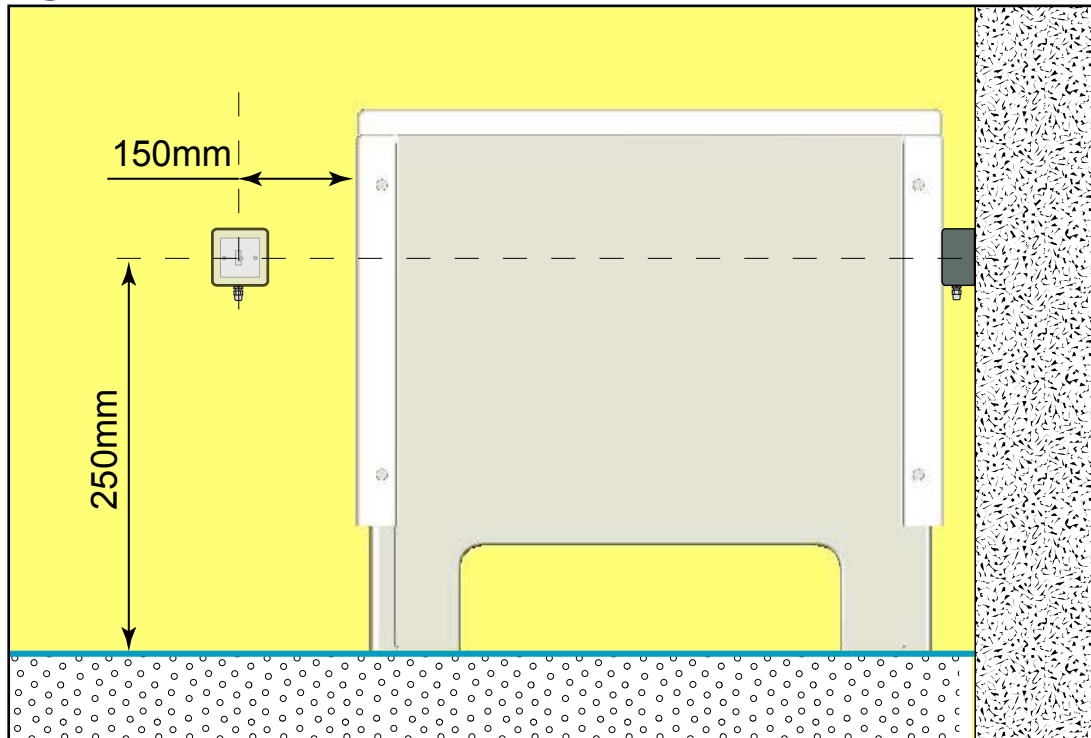
**Fig 7 & 8**

The bath requires a 1 off 230 volt, 1.25kW, waterproof flex outlet, located at either end of the bath in either of the positions shown. Supplied from a protected fused spur.

**Fig 7**



**Fig 8**



# Technical Information.

## Electrics

A.C. Input 220 - 240V~, 50/60Hz, 1.25kW Maximum.

DC Output, 24v, 8 Amps.

## Safe Working Load

280 Kilograms

## Test Load

325 Kilograms

## Length

1690mm.

1770mm required to provide minimum clearance.

## Width

690mm

770mm required to provide minimum clearance.

## Height Range

680mm Minimum

980mm Maximum.

## Bath Water Capacity

218 litres to the overflow.

## Water Pressures

A Minimum of 1 bar is required on both Hot and Cold water supplies.

Maximum 10 bar.

Maximum differential between Hot and Cold 5:1.

**If the bath is to be fitted with Low Level Taps (LLt) the Hot and Cold supply pressures must be equal and a minimum of 1 bar, maximum 5 bar.**

**Technical Helpline - Direct Telephone Number - 01242 822972**



Unit 11f, Coln Park

Andoversford

Gloucestershire

GL54 4HJ

Tel 01242-820820 Fax01242-821110

e mail: [sales@astorbannerman.co.uk](mailto:sales@astorbannerman.co.uk)

VAT Reg No. 630609068